



1



2

Volunteer Programme (North) January - March 2026



**Bryniau Clwyd a
Dyffryn Dyfrdwy**
Tirwedd
Cenedlaethol

**Clwydian Range
and Dee Valley**
National
Landscape

In partnership with

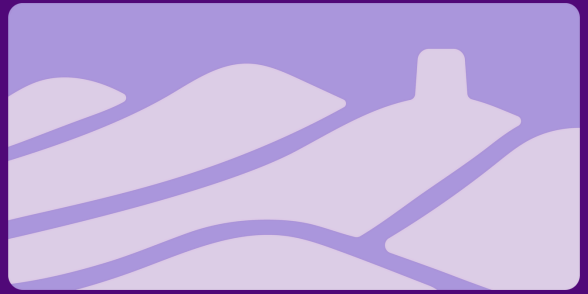


**Cyfoeth
Naturiol
Cymru**
**Natural
Resources
Wales**



3

Successes from October-December



HEDGE LAYING

1

A massive thank you to everyone that came out to get the hedge on the top car park laid. Special mention to John C and Richard P as well for tackling the line of hedge decimated by the flail- not the most interesting of tasks but it ensures that the whips won't die.

It feels like every new hedge we lay has a neater finish. It is worth having a look at the finished result- it looks fantastic! Geraint (new ranger for the Dee valley) has many years hedge laying under his belt, and gave us a very big thumbs up!

WATER VS. WALL

2

After the recent heavy rain, the new path edging was put to its first test and passed with flying colours! Built up by volunteers using the stone from the cliff works, the path side looks fantastic, and we were just waiting for a true test of the construction. Dry stone walling skills were clearly put to good use because the wall held firm and prevented erosion into the path side. Diolch yn fawr everyone!

BISHOPS WOOD

3

A huge thanks to all volunteers who came out to help Steve in maintaining Bishops Wood ensuring that it remains an accessible area for all to enjoy. Connecting Prestatyn Hillside, Meliden, and Prestatyn, this woodland reminds us that it's not just the destination that counts, but the journey too.





Tuesday 6th January 10am – 3pm

Loggerheads Country Park – Coppicing

Get stuck in with woodland management in the coppice area at Loggerheads.

Meet at Loggerheads car park –

Grid Reference - **SJ 19803 62639**, What3Words - **lifters.seabirds.split**

Wednesday 7th January 10am – 3pm

Moel Famau - Tower tidy up

Freshen up the Jubilee Tower for the New Year.

Meet at Penbarras car park –

Grid Reference - **SJ 1613 6058**, What3Words - **plums.delighted.posts**

Tuesday 13th January 10am – 3pm

Coed Moel Famau – Bench repair and trail maintenance

Help the Ranger team to maintain the accessibility trail and repair the picnic benches.

Meet at Coed Moel Famau car park –

Grid Reference - **SJ 17131 61072**, What3Words - **inventors.slam.sampled**

Wednesday 14th January 10am – 3pm

Coed Alex - Woodland thinning

Help with yearly winter works at this small broadleaf woodland.

Meet at Coed Llangwyfan car park –

Grid Reference - **SJ 13889 66848**, What3Words – **leaps.skewed.inspects**

Manor Hill Quarry - Collecting and burning vegetation

Continuing work to restore this habitat of principle importance into favourable condition.

Meet at Prestatyn Hillside car park

Grid Reference - **SJ 07166 82106**, What3Words - **restores.shoving.workshop**

Tuesday 20th January 10am – 3pm

Loggerheads Country Park - Fence weaving

Come put our coppice material to good use by restoring the fence along the path near the far steps.

Meet at Loggerheads car park –

Grid Reference - **SJ 19803 62639**, What3Words - **lifters.seabirds.split**

Wednesday 21st January 10am – 3pm

Coed Moel Famau - Arboretum maintenance

Maintain the footpath around the arboretum to keep it looking fresh for visitors.

Meet at Coed Moel Famau car park –

Grid Reference - **SJ 17131 61072**, What3Words - **inventors.slam.sampled**

Wednesday 28th January 10am – 3pm

House for a Grouse - Conifer clearance

Remove invasive coniferous trees to keep the moorland open and maintain this important habitat.

Meet at Coed Moel Famau car park –

Grid Reference - **SJ 17131 61072**, What3Words - **inventors.slam.sampled**

Manor Hill Quarry - Collecting and burning vegetation

Continuing work to restore this habitat of principle importance into favourable condition.

Meet at Prestatyn Hillside car park

Grid Reference - **SJ 07166 82106**, What3Words - **restores.shoving.workshop**



Tuesday 3rd February 10am – 3pm

Loggerheads Country Park - Path edging

Help maintain the path side at Loggerheads. We will continue down from where we left off last year!

Meet in Loggerheads car park –

Grid Reference - **SJ 19803 62639**, What3Words - **lifters.seabirds.split**

Wednesday 11th February 10am – 3pm

House for a Grouse - Conifer clearance

Remove invasive coniferous trees to keep the moorland open and maintain this important habitat.

Meet at Coed Moel Famau car park –

Grid Reference - **SJ 17131 61072**, What3Words - **inventors.slam.sampled**

Bishops Wood - Coppicing

Increase the woodland's biodiversity by allowing more light to reach the forest floor and encourage a wider range of ground flora.

Meet at Prestatyn Hillside car park -

Grid Reference - **SJ 07166 82106**, What3Words - **restores.shoving.workshop**

Tuesday 24th February 10am – 3pm

Loggerheads Country Park - Cleft fencing

Come learn the traditional skill of cleft fencing, using hand tools and ash trees from our woodland.

Meet in Loggerheads car park –

Grid Reference - **SJ 19803 62639**, What3Words - **lifters.seabirds.split**

Wednesday 25th February 10am – 3pm

Coed Llangwyfan – Coppicing

Maintain the woodland at Coed Llangwyfan by coppicing trees to make room for new growth.

Meet at Coed Llangwyfan car park –

Grid Reference - **SJ 13889 66848**, What3Words – **leaps.skewed.inspects**

Bishops Wood - Coppicing

Increase the woodland's biodiversity by allowing more light to reach the forest floor and encourage a wider range of ground flora.

Meet at Prestatyn Hillside car park -

Grid Reference - **SJ 07166 82106**, What3Words - **restores.shoving.workshop**



March



Bryniau Clwyd a
Dyffryn Dyfrdwy
Tirwedd Cenedlaethol

Clwydian Range
and Dee Valley
National Landscape

Tuesday 3rd March 10am – 3pm

Loggerheads Country Park - Cleft fencing

Come learn the traditional skill of cleft fencing, using hand tools and ash trees from our woodland.

Meet in Loggerheads car park –

Grid Reference - **SJ 19803 62639**, What3Words - **lifters.seabirds.split**

Tuesday 10th March 10am – 3pm

Moel Famau - Conifer removal

Help to maintain this important moorland habitat by removing invasive coniferous trees to keep the moorland open.

Meet at Penbarras car park –

Grid Reference - **SJ 1613 6058**, What3Words - **plums.delighted.posts**

Wednesday 11th March 10am – 3pm

Prestatyn Hillside - Vegetation clearance

Cut back encroaching vegetation on the steep steps that form part of Offa's Dyke National Trail.

Meet at Nant yr Ogof Quarry -

Grid Reference - **SJ 06694 80670**, What3Words - **automatic.contacts.lavished**

Tuesday 17th March 10am – 3pm

Loggerheads Country Park - Path edging

Help to maintain the path side at Loggerheads.

Meet in Loggerheads car park –

Grid Reference - **SJ 19803 62639**, What3Words - **lifters.seabirds.split**

Wednesday 18th March 10am – 3pm

Moel Famau - Car park tidy up

Get the car parks looking fresh ahead of the Easter holidays.

Meet at Penbarras car park –

Grid Reference - **SJ 1613 6058**, What3Words - **plums.delighted.posts**

Wednesday 25th March 10am – 3pm

Prestatyn Hillside - Vegetation clearance

Cut back encroaching vegetation on the steep steps that form part of Offa's Dyke National Trail.

Meet at Nant yr Ogof Quarry -

Grid Reference - **SJ 06694 80670**, What3Words - **automatic.contacts.lavished**

Thank you so much for your hard work!